

# WINDSOR



WHITTINGHAM  
PLACE



Five bedroom detached family home with large integral garage

## *This home features...*

- Beautifully designed contemporary kitchen with integrated branded appliances
- Open plan kitchen/diner, utility and WC, and bi-fold patio doors
- Five generous double bedrooms, two with ensembles
- Large family bathroom plus Jack and jill bathroom
- Spacious family lounge
- Generous turfed and fenced gardens
- Integral double garage and private driveway
- Quality fixtures & fittings throughout



NEW PARK  
GROUP



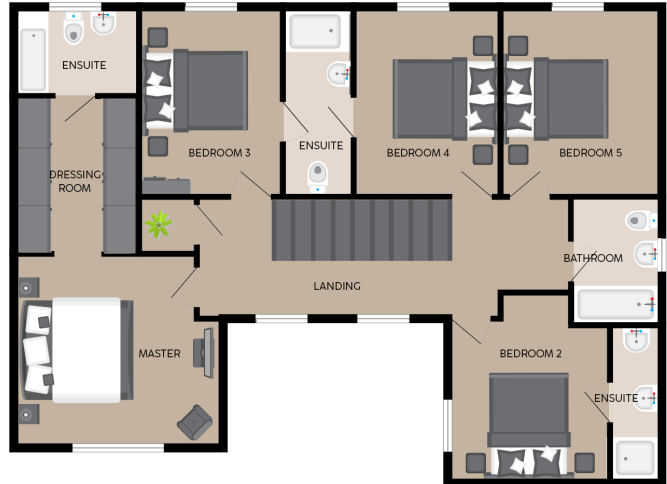
Dewhurst  
Homes

# WINDSOR

Five bedroom detached family home with integral garage



WHITTINGHAM  
PLACE



## GROUND FLOOR

	METRES	FEET/INCHES
LOUNGE	5.44 x 4.03	17.84 x 13.21
DINING	3.06 x 4.03	10.05 x 13.21
KITCHEN/FAMILY	2.85 x 2.57	9.34 x 8.44
UTILITY	1.3 x 0.9	4.27 x 2.95
WC	5.19 x 8.46	17.01 x 27.76
STUDY	3.99 x 1.75	13.09 x 5.73
GARAGE	5.46 x 5.69	17.92 x 18.65

## FIRST FLOOR

	METRES	FEET/INCHES
BEDROOM ONE	3.74 x 4	12.27 x 13.12
DRESSING ROOM	3.06 x 2.42	10.03 x 7.95
ENSUITE	1.68 x 2.42	5.5 x 7.95
BEDROOM TWO	3.1 x 3.39	10.16 x 11.11
ENSUITE	3.02 x 1	9.91 x 3.28
BEDROOM THREE	3.66 x 2.79	12.02 x 9.15
BEDROOM FOUR	3.66 x 2.84	12.02 x 9.31
ENSUITE	3.66 x 1.36	12.02 x 4.47
BEDROOM FIVE	3.66 x 2.88	12.02 x 9.46
BATHROOM	2.46 x 1.74	8.08 x 5.71

TOTAL FLOOR AREA: 2188 sq.ft (2032 sq.m) approx.

The illustration and dimensions shown are for a typical plot and not necessarily specific. Specification will vary from plot to plot Please contact Dewhurst Homes for detailed plans.

## Benefits Include...

Beautifully designed contemporary kitchen with integrated branded appliances | 5 burner induction or 4 ring gas hob with extractor | Bi-fold doors leading to patio and fully fenced & turfed garden | White Vitra sanitary ware with Hansgrohe (or equivalent) fittings | Porcelain tiling | Heated towel rails | White downlighters | Modern doors | White painted staircase with white handrails & newel posts | Neutral decor throughout | Security alarm | Smoke alarm | Fibre optic BT masterboxes | Front landscaping and turfing | Exterior lighting | Integral double garage | Private driveway | Electric vehicle charging provision | 10 year warranty... and so much more.

SEE NEW PARK GROUP SPECIFICATION SHEET FOR FULL DETAILS

# SITE MAP

-  **THE WINDSOR**  
5 BED DETACHED HOUSE WITH INTEGRATED DOUBLE GARAGE (PLOTS 4, 6, 11 & 13)
-  **THE BALMORAL**  
4 BED DETACHED HOUSE-WITH SEPARATE DOUBLE GARAGE (PLOTS 3, 10 & 14)
-  **THE WHITEHALL**  
4 BED DETACHED HOUSE WITH SEPARATE DOUBLE GARAGE (PLOTS 8 & 16)
-  **THE SANDRINGHAM**  
4 BED DETACHED HOUSE WITH SEPARATE DOUBLE GARAGE (PLOTS 7, 9 & 15)
-  **THE LOWTHER**  
4 BED DETACHED HOUSE WITH INTEGRATED DOUBLE GARAGE (PLOTS 5 & 12)



Site map is indicative and for illustrative purposes only.





# WHITTINGHAM PLACE

WHITTINGHAM LANE, BROUGHTON PR3 5EB

*Appointments*



DEWHURST HOMES

01772 788811  
fulwood@dewhursthomes.co.uk



NEW PARK  
GROUP